



IRISH CASING COMPANY

Specialists in Natural Casings, Offal &
Meat Products for Human Consumption





COMPANY BACKGROUND

IRISH CASING COMPANY (ICC) was established in 1972 by Claus Jürgen Kersting, proprietor of MARTH naturdärme, a German casing company established in 1946.

ICC has strategic alliances in Ireland, Germany, Poland, Iceland, the UK, Belgium, Portugal, Spain, Romania and Turkey. Within this are over 250 employees, with a further 100 employed in Egypt and China, who work in teams for selection of sheep and hog casings, derived from raw materials harvested in Ireland, EU, Iceland and New Zealand.

Irish Casing Company is a member of:

INSCA – International Natural Sausage Casing Association

ENSCA – European Natural Sausage Casing Association

NSCA (UK) – Natural Sausage Casing Association - UK

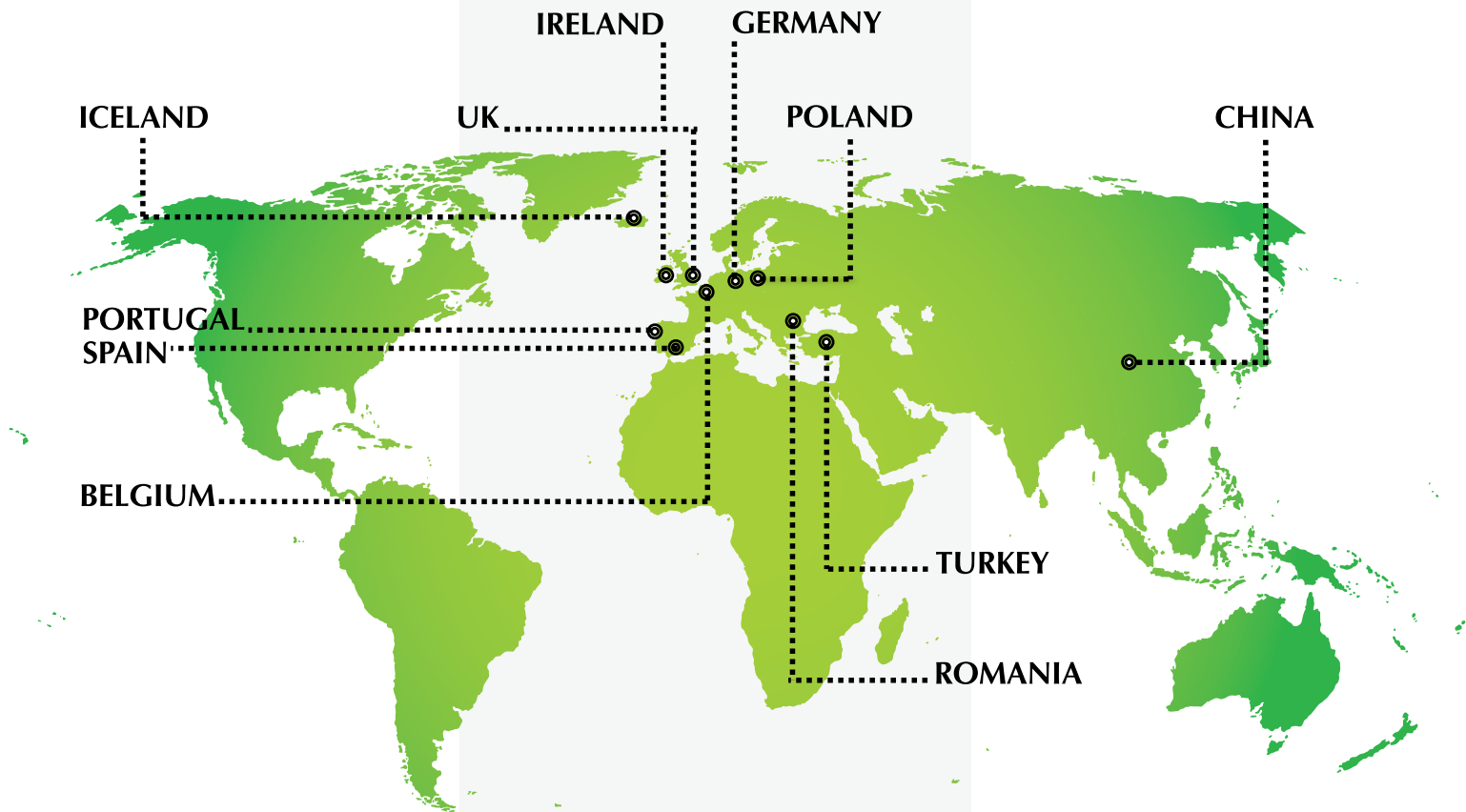
In addition to our casing operations, Irish Casing Company expanded its operation into the production of meat co-products for human consumption in the mid 80's. All of our raw materials are sourced from export approved beef, pork and lamb plants in Ireland and all over the EU. Many of our products are produced and packed with our own staff and packed in our own ICC brand carton.

We endeavour to continue providing a quality service to customers through specialist production, training and after sales services.

ICC's main export markets are Europe, Africa, China, Hong Kong, Singapore, Japan, Korea and other Far East markets.



CONTENTS



BEEF
Pages 5 - 17



SHEEP
Pages 18 - 24



PORK
Pages 25 - 29



NATURAL CASINGS
Pages 30 - 31

BEEF





Beef Tripe - B 308 A



Beef Tripe - B 308 A



Green Beef Tripe - B 309



Green Beef Tripe - B 309



Cooked Beef Mountain Chain - B 318



Green Beef Mountain Chain - B 319



Beef Honeycomb - B 311



Beef Honeycomb - B 311



Beef Omasum - B 312 A



Beef Omasum - B 312 A



Diced Beef Tripe - B 315



Diced Beef Tripe - B 315



Beef Diced Reed - B 314



Beef Diced Reed - B 314



Beef Whole Reed - B 316



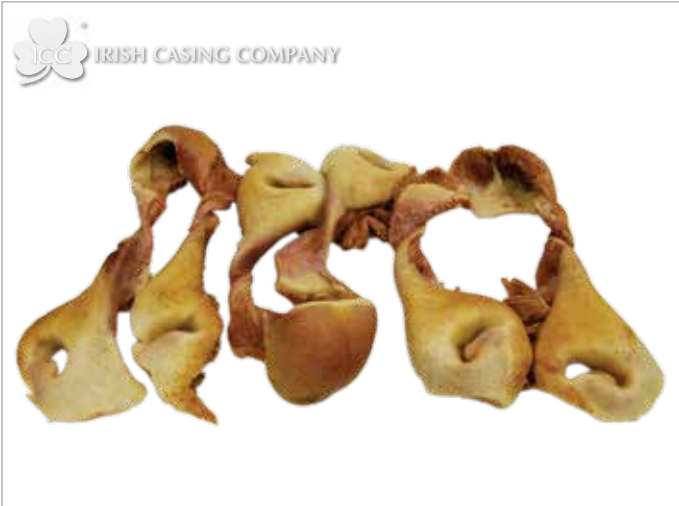
Beef Whole Reed - B 316



Beef White Feet - B 359



Beef White Feet - B 359



Beef Snouts - B 345



Beef Snouts - B 345



Beef Mask - B 348



Beef Mask - B 348



Beef Singed Feet - 0684



Beef Singed Feet - 0684



Beef Singed Snouts - B 346



Beef Singed Snouts - B 346



Beef Singed Mask - B 349



Beef Singed Mask - B 349



Beef Singed Ears - B 350



Beef Singed Ears - B 350



Beef Singed Tail Tips - B 305



Beef Singed Tail Tips - B 305



Beef Singed Hind Feet - B 362



Beef Singed Hind Feet - B 362



Beef White Ears - B 351



Beef White Ears - B 351



Beef White Tails - B 306



Beef White Tails - B 306



Beef Skin - B 375



Beef Skin - B 375



Beef Paddywack - 364



Beef Paddywack - B 364



Beef Testicles - B 325



Beef Testicles - B 325



Beef Pizzles - B 324



Beef Pizzles - B 324



Beef Flexor Tendon - B 368



Beef Flexor Tendon - B368



Beef Achilles Tendon - B 370



Beef Achilles Tendon - B 370



Beef Aorta - B 320



Beef Aorta - B 320



Beef Tubed Aorta - B 321



Beef Tubed Aorta - B 321



Beef Flank Membrane - B 390



Beef Flank Membrane - B 390



Beef Sinews - B 395



Beef Sinews - B 395



Beef Striploin Membrane - B 391



Beef Silverskin - B 376



Beef Mixed Tendon - B 371



Beef Mixed Tendon - B 371



Beef Diaphragm Membrane - B 392



Beef Diaphragm Membrane - B 392



Beef Lips - B 352



Beef Heart - B 302



Beef Cheek Meat - B 402



Beef Kidney -B 303



Beef Liver - B 301



Beef Head Meat - B 401



IRISH CASING COMPANY

SHEEP





Scalded Lamb Tripe - L 312



Scalded Lamb Tripe - L 312



Lamb Green Tripe - L 320



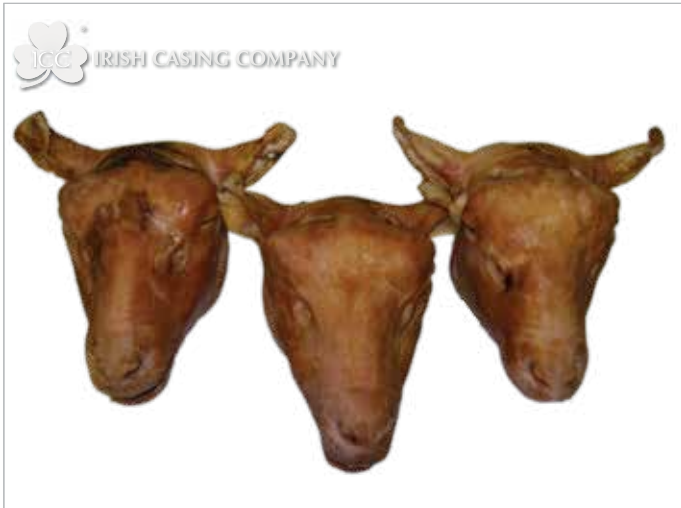
Lamb Green Tripe - L 320



Lamb White Heads - L 326



Lamb White Heads - L 326



Lamb Singed Heads - L 327



Lamb Singed Heads - L 327



Lamb Head / Feet - L 350



Lamb Head / Feet - L 350



Lamb Singed Feet - L 325



Lamb Singed Feet - L 325



Lamb White Feet - L 314



Lamb White Feet - L 314



Lamb Neck Bone (Short Cut) - L 338



Lamb Barrel Neck - L 337



Lamb Neck Bone - L 338



Lamb Femur Bone - L 342



Lamb Loin Bone - L 333



Lamb Breast Bone - L 331



Lamb Split Back Bone - L 335



Lamb Cage Bone - L 334



Lamb Flap Bone In - L 336



Lamb Flap Bone In - L 336



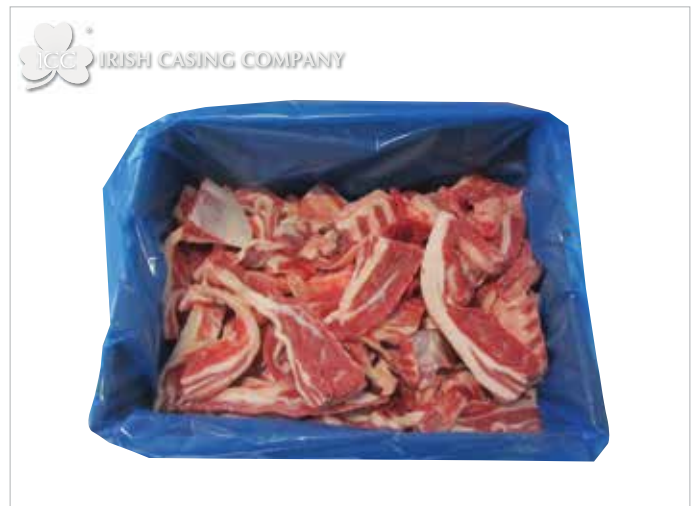
Lamb Whole Neck Bone - L 330



Lamb Mixed Bones - L340



Lamb Sinew - L 360



Lamb Sinew - L 360



Lamb Kidney Trimmed and Untrimmed - L 361



Lamb Liver - L 362



Lamb Lung - L 363



Lamb Testicle - L 364



Lamb Pizzle - L 365



Lamb Sweetbread - L 366



Lamb Skirt - L 367



Lamb Heart - L 368

PORK





Fully Cooked Pork Stomachs - P 0955



Fully Cooked Pork Stomachs - P 0955



Fully Cooked Sow Stomach - S 0900



Fully Cooked Sow Stomach - S 0900



Raw Pork Stomachs - P 0901



Raw Pork Stomachs - P 0901



Pork Rectums - P 0962



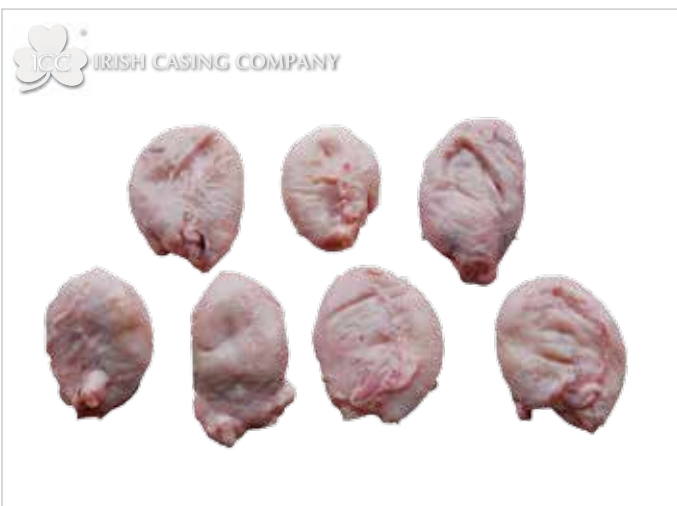
Pork Rectums - P 0962



Pork Crowns - P 0966



Pork Crowns - P 0966



Pork Bladder - P 0970



Pork Bladder - P 0970



Pork Uteri - P 0965



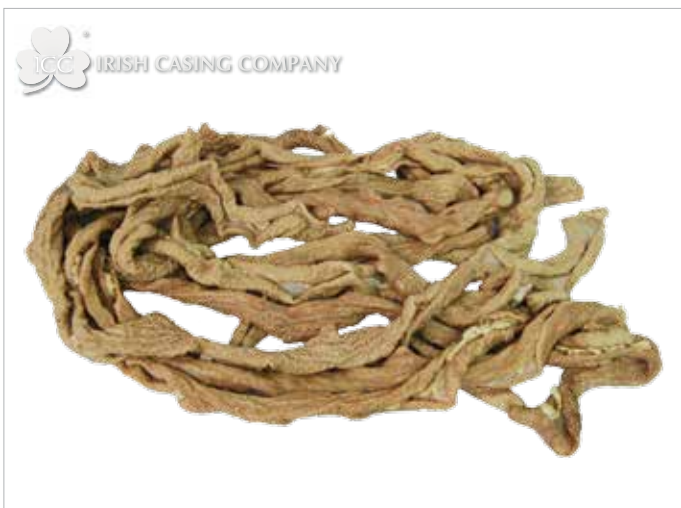
Pork Uteri - P 0965



Pork Uteri - P 0964



Pork Uteri - P 0964



Pork Cooked Intestine - P 0958



Pork Cooked Intestine - P 0958



Pork Front Feet - 1138



Pork Front Feet - 1138



Pork Hind Feet - 1149



Pork Hind Feet - 1149



Pork Pancreas - P 0975



Pork Pancreas - P 0975



IRISH CASING COMPANY

NATURAL CASINGS



Sheep Casings

Caliber	Approx. Stuffing Capacity Before Cooking
16 - 18mm	15-16kg
18 - 20mm	17 - 18kg
20 - 22mm	21- 23kg
22 - 24mm	25 - 27kg
24 - 26mm	27 - 29kg
26 - 28mm	29 - 31kg
28mm/up	31 - 34kg



Sheep Casing

Spooled Sheep Casings

Spooled for quicker processing



Spooled Sheep Casing

Beef Rounds

Average Approx. Diameter	Average Approx. Stuffing Capacity Per 30-Meter Set
35 - 38mm	30kg
38 - 40mm	33 - 34kg
40mm - 43mm	36 - 37kg
43 - 46mm	39 - 40kg
46mm/up	41kg / up



Beef Rounds

Hog Casing

Average Approx. Diameter	Average Approx. Capacity / Bundle
30/down	41kg/down
30 - 32mm	41 - 45kg
32 - 35mm	48 - 52kg
35 - 38mm	52 - 57kg
38 - 42mm	57 - 61kg
42 - 44mm	59 - 64kg
44mm/up	61 - 68kg



Hog Casing



Spollanstown Ind. Estate, Tullamore,
County Offaly, Rep. of Ireland
Tel: 353-5793-21714,
Fax: 353-5793-51306,
Email: info@irishcasings.com
Web: www.irishcasings.com

GERMANY
RUDOLF MARTH

Inh. C. J. Kersting e.K.
Böttgerstr. 7
38122 Braunschweig
Postfach 6780, 38058 Braunschweig
Tel: +49 0531 - 874101
Fax: +49 0531 - 872914
Email: info@marth.de
Web: www.marth.de

POLAND

Noworim Sp. z o.o.
ul. Sienkiewicza 7c
PL - 72-200 Nowogard, Poland
Tel: +48 (91) 3922-394
Fax: +48 (91) 3922-018
Email: biuro@noworim.pl
Selectors for Sheep and
Hog-Casings, Tubing

ICELAND

Nordlenska Ltd, Grimseyjargata,
600 Akureyri,
Iceland
Tel: +354 460 8850
Fax: +354 460 8854

